

# Kansas Corporation Commission



*Doug Louis, Director*  
*d.louis@kcc.ks.gov*

*316-337-6200*

*<http://kcc.ks.gov>*

# Discussion Topics

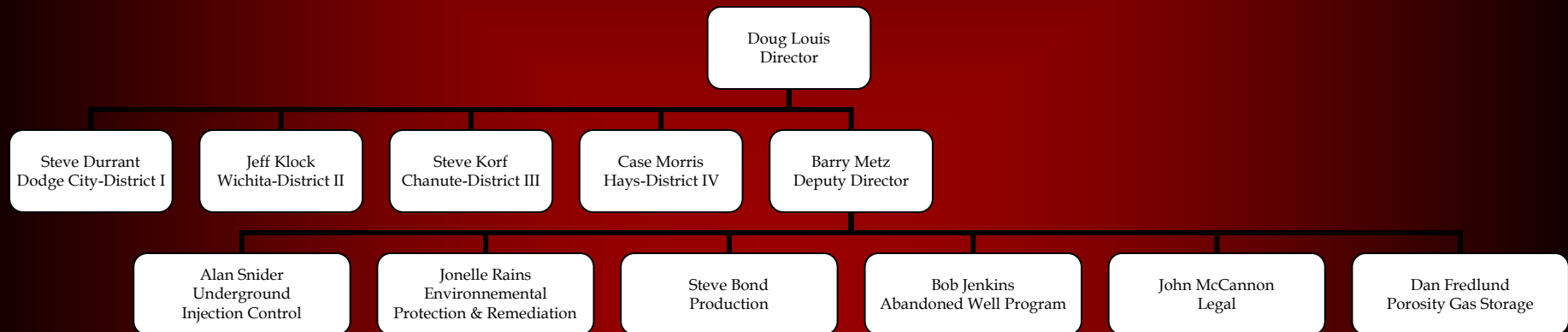
- ❖ How the KCC is organized
- ❖ How the Conservation Division is organized
  - ❖ Responsibilities and activities of the Conservation Division
    - ❖ Topics of interest

# KANSAS CORPORATION COMMISSION



# ORGANIZATIONAL CHART

# CONSERVATION DIVISION



# ORGANIZATIONAL CHART

# KCC Broad Responsibilities

Regulate exploration and production of oil and gas.



**Our mission is to protect natural resources and correlative rights.**

**This is done in part by preventing waste and by enforcing regulations that provide guidelines of producing resources efficiently.**

**Kansas Statutes 55-152 gives us authority to write regulations.**

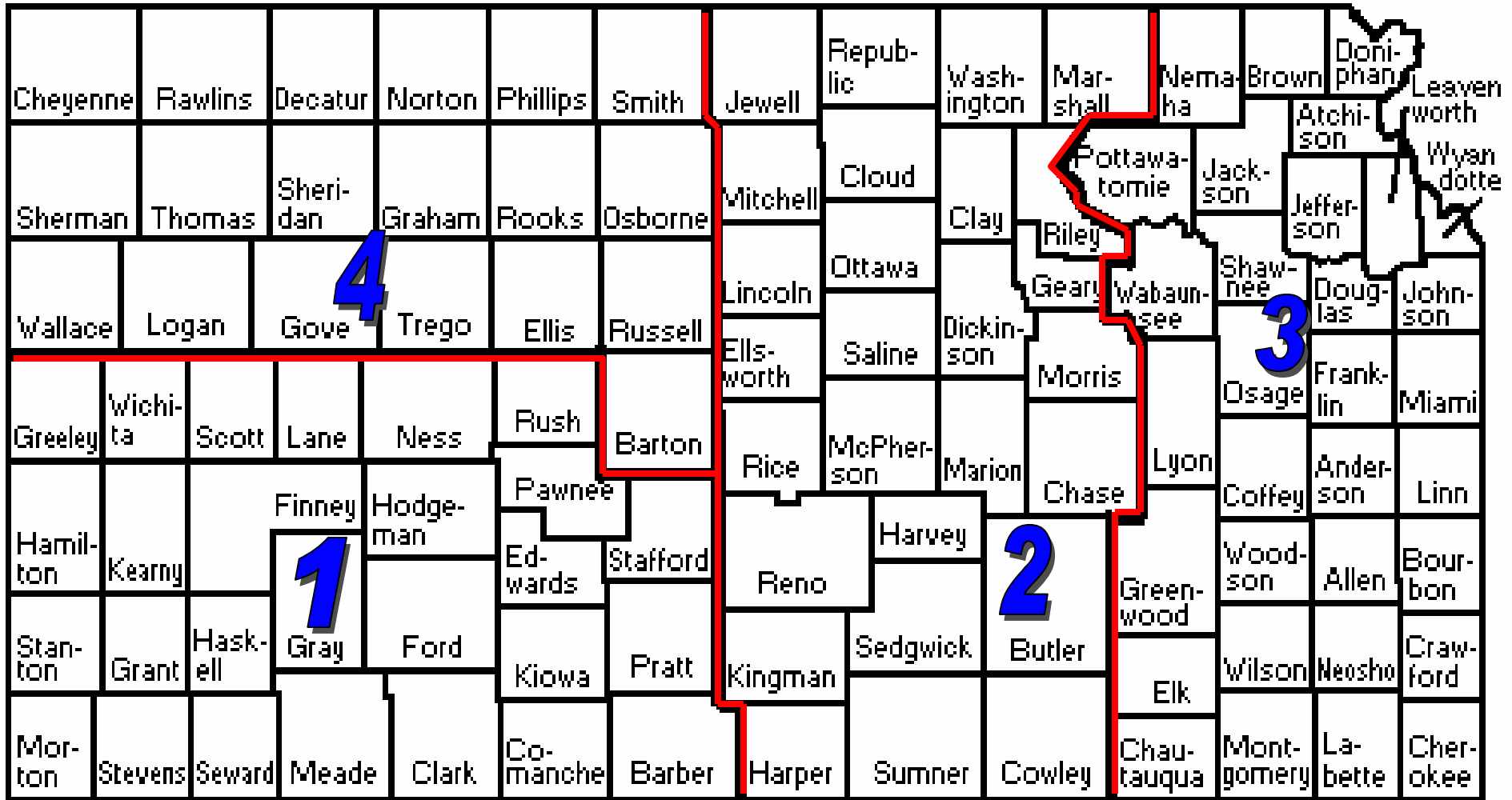
# Central Office Activities/Permitting

- ❖ Gas Gathering
- ❖ Intents-to-Drill
- ❖ Seismic Activities
- ❖ Legal Proceedings
- ❖ UIC-Class II Wells
- ❖ Well Record Library
- ❖ Cathodic Protection Wells
- ❖ Licensing-Financial Assurance
- ❖ Manage Abandoned Well Plugging Program<sup>6</sup>

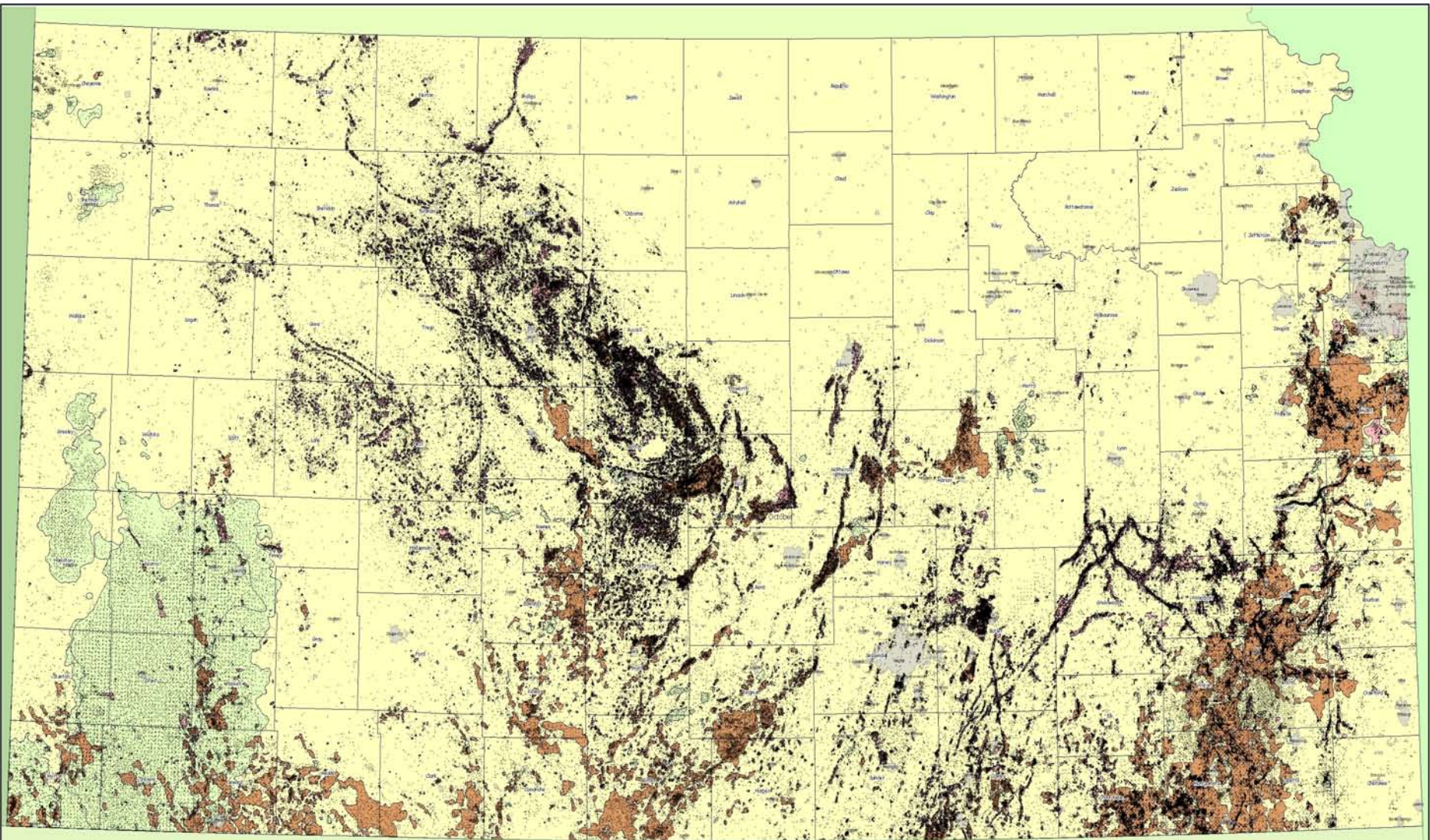
# **District Office Field Activities**

- ❖ Lease Inspections
  - ❖ Inspect Rotary Drill Pits
  - ❖ Witness Production Tests
  - ❖ Oversee Plugging of Wells
  - ❖ Oversee Remediation Cases
  - ❖ Investigate Oil & Brine Spills
  - ❖ Witness Tests on Injection Wells
- ❖ Manage Underground Porosity Gas Storage Program

# Kansas Corporation Commission District Field Offices

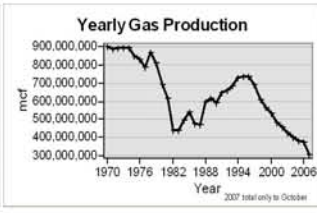
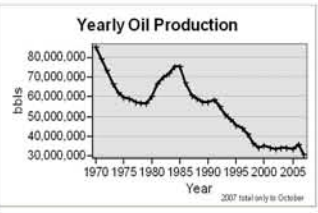


District # 1 (620) 225-8888 210 E. Frontview, Ste A Dodge City, KS 67801 Field Supervisor - Steve Durrant	District # 2 (316) 630-4000 3450 N. Rock Rd., Ste 601 Wichita, KS 67226 Field Supervisor - Jeff Klock	District # 3 (620) 432-2300 1500 W. 7 <sup>th</sup> Street Chanute, KS 66720 Field Supervisor - Steve Korf	District # 4 (785) 625-0550 2301 E. 13 <sup>th</sup> Street Hays, KS 67601 Field Supervisor - Case Morris	Conservation Office (316) 337-6200 130 S. Market Rm. 2078 Wichita, KS 67202 Division Director - Doug Louis
-----------------------------------------------------------------------------------------------------------------------	-------------------------------------------------------------------------------------------------------------------	------------------------------------------------------------------------------------------------------------------------	-----------------------------------------------------------------------------------------------------------------------	------------------------------------------------------------------------------------------------------------------------



**Kansas Corporation Commission  
Conservation Division  
District Field Offices**

District 1 Dodge City, Kansas ( SW Kansas) 620-225-8888  
 District 2 Wichita, Kansas (South & North Central Kansas) 316-630-4000  
 District 3 Chanute, Kansas (Eastern Kansas) 620-432-2000  
 District 4 Hays, Kansas (Northwestern Kansas) 785-625-0550



- Well Location  
 - City  
 - Oil  
 - Oil and Gas  
 - Gas

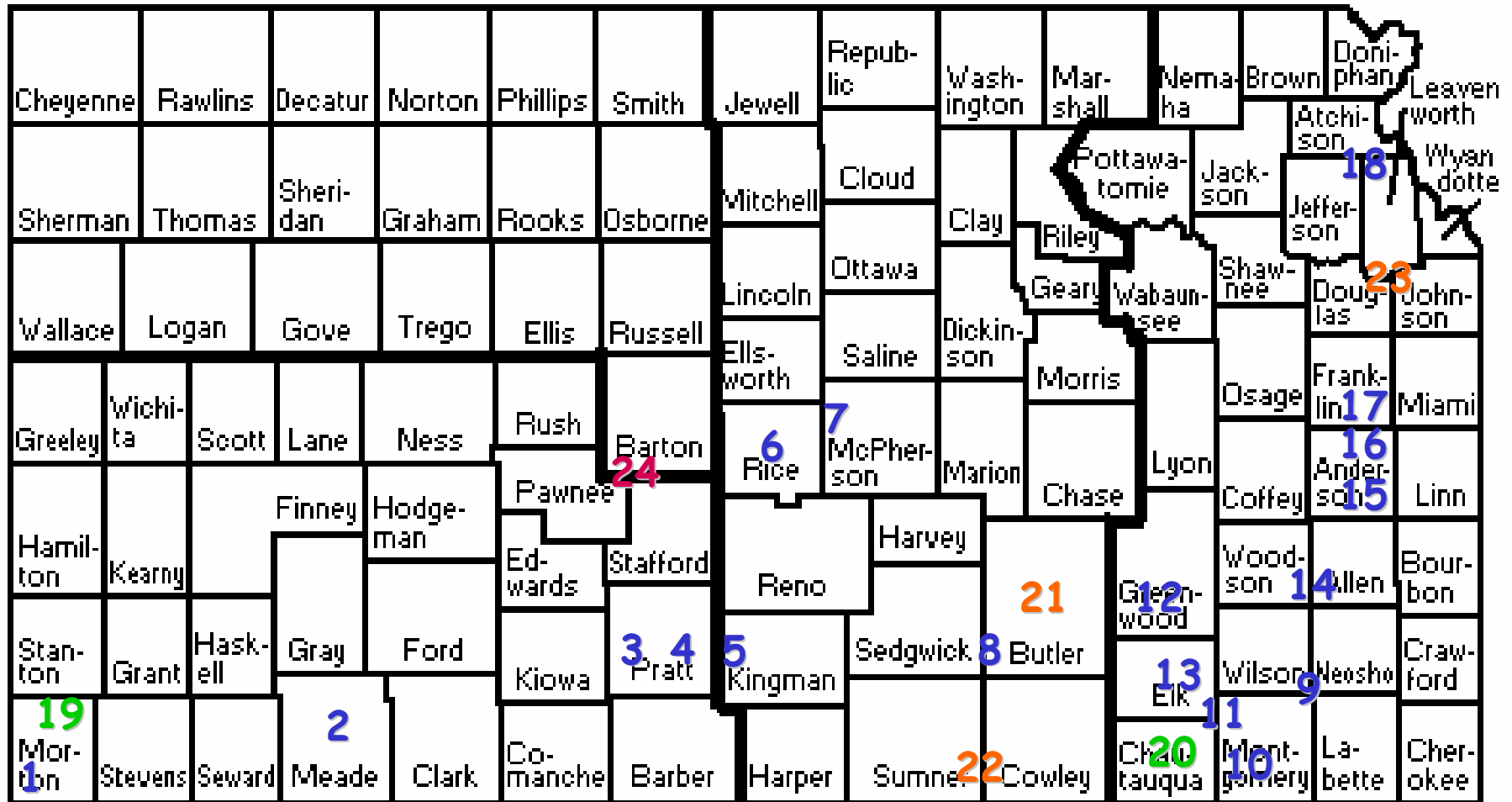
This map shows the distribution of over 40,000 oil and gas wells in the State of Kansas. Well locations may include active, abandoned and other well codes in the Conservation Division RDBMS. This data is constantly under development.

The information provided is updated to best of KCC knowledge. KCC makes no guarantee or warranties as to the completeness or accuracy of the data represented on this map.

**OIL AND GAS WELLS  
WITH FIELDS  
IN KANSAS**

**KANSAS**  
CORPORATION COMMISSION  
Information Technology, February 2008

*BLUE= ACTIVE STORAGE FIELD/GREEN=FIELD IN DEPLETION/ORANGE=ABANDONED STORAGE FIELD/  
 PINK= STORAGE FIELD CONVERTED TO PRODUCING GAS FIELD*



- |                                      |                               |                              |
|--------------------------------------|-------------------------------|------------------------------|
| 1- BOHEM (CIG)                       | 9- LIBERTY NORTH (Atmos)      | 17- NORTH WELDA (SSC)        |
| 2- BORCHERS N. (Pan Gas Storage Co.) | 10- LIBERTY SOUTH (Atmos)     | 18- MCLOUTH (SSC)            |
| 3- BREHM (OneOK)                     | 11- ELK CITY (SSC)            | 19- RICHFIELD (Duke Energy)  |
| 4- KONOLD EAST (OneOK)               | 12- BUFFALO (Cherokee Wells)  | 20- LONGTON (Quest Cherokee) |
| 5- CUNNINGHAM (NNG)                  | 13- FREDONIA (Cherokee Wells) | 21- BOYER (Williams)         |
| 6- ALDEN (SSC)                       | 14- PIQUA (SSC)               | 22- COLLINSON (Centerpoint)  |
| 7- LYONS (NNG)                       | 15- COLONY (SSC)              | 23- CRAIG (SSC)              |
| 8- RAYTHEON AIRCRAFT (Raytheon)      | 16- SOUTH WELDA (SSC)         | 24- ADOLF (NA)               |

# **A d d i t i o n a l R e s p o n s i b i l i t i e s**

❖ SOLAR

❖ Well Inventory

❖ Electronic Well Logs

❖ Compressed Air Energy Storage

❖ Remediation Site Specific Planner

❖ Carbon Dioxide Sequestration-HB 2419

# Topics of Interest For Eastern Kansas



- ❖ Kansas Surface Owner Notification Act
  - ❖ Abandoned Well Plugging Program
- ❖ Reporting of Abandoned Wells On-Line

# K S O N A

(Senate Sub. for HB 2032, formerly SB 184)

## MAJOR ELEMENTS OF THE BILLS

❖ **Surface owners will be notified with:**

- *Intent-to-drill filings*
- *Application to Abandon Well*
- *Request for Change of Operator*

**The requirements will go into effect July 1, 2010**

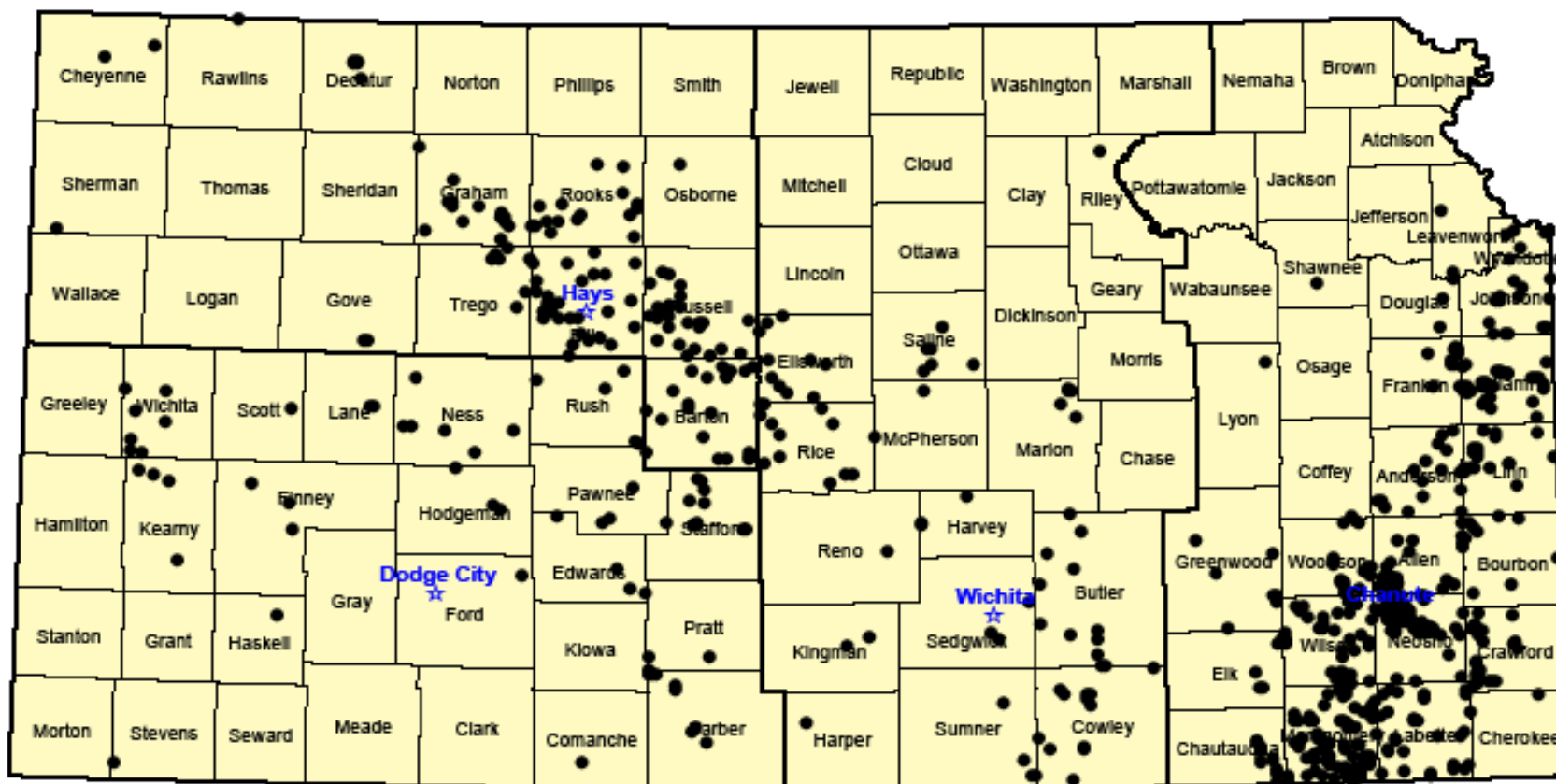
# ABANDONED WELL

Funding to the abandoned well plugging and site remediation program is provided through four funding sources:

- ❖ Increased assessments on crude oil and natural gas production through the conservation fee fund
  - ❖ General fund
  - ❖ State water plan
- ❖ 50% of money is received by the state through the federal mineral leasing program

Total funding package was expected to be in the amount of \$1,600,000 per year.

# Total Abandoned Wells Plugged Since Inception of Abandoned Wells Fund Established by 1996 Legislature



- Location of an abandoned oil and gas well or group of wells plugged since inception of the plugging program in 1996

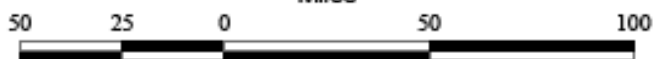
★ District Field Offices

□ Conservation Districts

■ County



Miles



**KANSAS  
CORPORATION  
COMMISSION**

Information Resources, GIS Section  
17 December 2007

# KANSAS CORPORATION COMMISSION

- Home
- About the KCC
- Consumer Information
- Docket Filings
- Electric Issues
- State Energy Office
- Liquids Pipeline
- Motor Carriers
- Natural Gas Issues
- Oil and Gas**
- Pipeline Safety
- Telecom Issues
- Underground Utility Damage Prevention
- Video Competition



[News Room](#) | [Calendar](#) | [Site Map](#) | [Services Directory](#) | [Maps](#) | [Employment](#) | [Contact Us](#) | [Other Links](#)

## Report Abandoned Well

The Kansas Corporation Commission is actively looking for abandoned oil and gas wells. Commission field staff investigates these wells in order to determine if they pose a risk to public safety or the environment.

This form will allow you to submit information about abandoned oil and gas wells in Kansas and may be used in the examination of the reported well. If necessary, you may be contacted by a Commission employee for additional information.

Thank you for assisting the Commission in identifying these wells. If you have any questions, please [contact us](#).

Required fields are denoted by an asterisk (\*).

\* **What is your name?**

\* **Phone**

**Address**

**City**

\* **Email**

### Information About the Well

A dramatic sunset or sunrise over a dark landscape. The sky is filled with vibrant orange and red clouds, with a tall, dark tower silhouette in the center. The overall mood is intense and fiery.

**Doug Louis, Director**

**d.louis@kcc.ks.gov**

**316-337-6200**

***www.kcc.ks.gov***