

# KCC CONSERVATION DIVISION NEWS

## KANSAS CORPORATION COMMISSION

**Thomas Wright**, *Chairman*  
**Michael Moffet**, *Commissioner*  
**Joe Harkins**, *Commissioner*

### Topeka Office

1500 S.W. Arrowhead Rd  
Topeka, KS 66604.4027  
Voice: 785.271.3100  
Fax: 785.271.3354

### Central Office

Finney State Office Building  
130 S. Market, Rm 2078  
Wichita, KS 67202.3802  
Voice: 316.337.6200  
Fax: 316.337.6211

**Doug Louis**,  
*Conservation Division Director*

### District Office #1

210 E. Frontview, Ste. A  
Dodge City, KS 67801  
Voice: 620.225.8888  
Fax: 620.225.8885

**Steve Durrant**, *Supervisor*

### District Office #2

3450 N. Rock Road  
Bldg. 600, Ste. 601  
Wichita, KS 67226  
Voice: 316.630.4000  
Fax: 316.630.4005

**Jeff Klock**, *Supervisor*

### District Office #3

1500 W. Seventh  
Chanute, KS 66720  
Voice 620.432.2300  
Fax: 620.432.2309

**Steve Korf**, *Supervisor*

### District Office #4

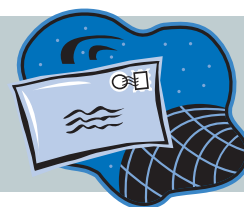
2301 E. 13th St.  
Hays, KS 67601-2651  
Voice: 785.625.0550  
Fax: 785.625.0564

**Case Morris**, *Supervisor*



To keep members of the oil and gas industry current regarding requirements and policies of the Kansas Corporation Commission, the Conservation Division periodically issues a newsletter to provide all operators up-to-date information on a variety of topics. Since there have been some regulation changes, now is an appropriate time to provide the industry with relevant information. This newsletter contains information pertaining to: current forms, contact information, gas gathering reference material, UIC reference material, and regulation updates (Well Completion form - ACO-1, Intent to Drill form - C-1, Well Plugging Applications - CP-1, Well Inventory, Spill Report forms, and Water Well regulations). ●

**Receive this publication by email  
please send your email address to:  
t.runnells@kcc.ks.gov**



**Check it Out @ <http://kcc.ks.gov/>**

- ✓ Reference guide to Gas Gathering: "What's New - Natural Gas Gathering Reference Guide"
- ✓ KCC current forms: Click on Oil & Gas and scroll down to Conservation Forms.

## UIC News

The Underground Injection Control section thanks you for your accuracy and patience on disposal and enhanced oil recovery application filings. The section has seen a 32 percent increase in filings over the past several years.

To assist operators with injection well filings two items have been added to the KCC website, <http://kcc.ks.gov/>: a completed sample U-1 injection application form and a sample newspaper publication (requiring the spot location of the well(s) and the requested maximum injection rate and pressure). Operators are encouraged to use the samples as a model for completing injection applications.

The Annual Report of Pressure Monitoring, Fluid Injection and Enhanced Recovery (U3C form) is due March 1<sup>st</sup>, including wells that may not have injected during the prior year but remain active under the injection authority. Injection records must be retained for 5 years.

A future regulation change will extend the protest period from 15 days to 30 days. This is to comply with federal regulation. Operators are asked to take this new time frame into consideration when making injection applications. The regulation change is expected to become effective later this year. ●

## On-Line Filing is Here



### Notice of Intent to Drill (C-1) & Application for Surface Pit (CDP-1)

Licensed operators can now file Notice of Intent to Drill – (form C-1) and Application for Surface Pit – (form CDP-1) online at: <https://solar.kgs.ku.edu/>

The SOLAR website is a joint venture of the Kansas Corporation Commission, Kansas Geological Survey and the Kansas Department of Revenue to provide electronic reporting and permitting of oil and gas activity in Kansas.

For more information on how to get started log on to: <http://kcc.ks.gov/conservation/forms/> and complete the master electronic filing certificate. Click on the FAQ section for basic answers.

✓ *Why wait? Intent to Drill permits are now valid for a full year. Avoid any potential costly delay in last minute filing. Go ahead and get that permit filed today!*

## Attention – Eastern Kansas Operators

- ✓ *Time for filing - Operators cannot spud a well prior to the effective date located on the upper left hand corner of the intent to drill form.*
- ✓ *District office notification - Operators must notify the Chanute District #3 office prior to spudding a well.*
- ✓ *Operators must complete Alternate II or plug the well within 30 days of the spud date. Operators must notify the District #3 office prior to cementing a well.*
- ✓ *Notification must be made from 8:00 a.m. to 5:00 p.m., Monday through Friday by calling 620.432.2300.*

## New Prorated Gas Field Reporting Requirements

Operators will be required to report production from the Hugoton, Panoma, Greenwood and Glick Fields beginning with July production. Operator reporting applies to both irrigation gas and commercial sales. The pipeline companies will no longer be required to report any production.

Production reports may be filed electronically, via e-mail. All operators not already reporting by this method should contact **Jon McKenzie** with the KCC at **785.271.3298** or by email at [j.mckenzie@kcc.ks.gov](mailto:j.mckenzie@kcc.ks.gov). **Jon** will provide a template and email address for reporting production.

For more information, please contact **Jon McKenzie** at the above number or **Jim Hemmen** at **316.337.6200**. ●

## Landowner Spill Notification

- ✓ Beginning October 26, 2007, operators are required to notify landowners or the landowner's representative of any spill or escape that requires reporting to the KCC.
- ✓ Notification to the landowner must occur within five business days following discovery or knowledge of the spill.
- ✓ The notification must advise the landowner of the operator's name, lease name and spill location, time and date the spill occurred, amount and type of material spilled and how the spill will be cleaned up.
- ✓ The operator must keep a record of the landowner notification for three years and furnish the record to the KCC, upon request.
- ✓ Failure to give the landowner notification of a spill or escape carries a \$250 penalty for the first violation, \$500 for a second violation, and \$1,000 penalty for third and subsequent violations.

## Production Department Changes

- ✓ Well Plugging application: CP-1s are now effective for 180 days.
- ✓ Abandoned/Dry-holes can no longer be converted to water wells.

## Plugging Oilfield Water Supply Wells

The Kansas Department of Health and Environment (KDHE) regulation, Kansas Administrative Regulation (K.A.R.) 28-30-7e states "Abandoned oil field water supply wells. A water well drilled at an oil and gas drilling site to supply water for drilling activities shall be considered an abandoned well immediately after the termination of the oil and gas drilling operations. The company in charge of the drilling of the oil and gas well shall be responsible for plugging the abandoned water well, in accordance to regulations, within 30 days after the termination of the oil and gas drilling operations. Responsibility for the water well may be conveyed back to the landowner in lieu of abandoning and plugging the well but the well must conform to the requirements for active status. The transfer must be made through a legal document, approved by the department, advising the landowner of the landowner's responsibilities and obligations to properly maintain the well, including the proper plugging of the well when it is abandoned and no longer needed for water production activities. If a transfer is to be made, the oil or gas drilling company shall provide the department with a copy of the transfer document within 30 calendar days after the termination of oil or gas drilling operations."

If you have any questions or need assistance plugging a water well, contact KDHE representatives **Don Taylor** at **785.296.5522** or **Richard Harper** at **785.296.3565**. ●

## Helpful Reminders Avoid Penalties

- ✓ Remember to include ALL WELLS on your well inventory regardless of the status.
- ✓ TA forms are due annually.
- ✓ Plan ahead for spud calls, etc. to ensure smooth operations.
- ✓ Timely file CP-4s (Well Plugging record) & ACO-1s (Well Completion form).

# KANSAS CORPORATION COMMISSION

## Central Office

Finney State Office Building  
130 S. Market, Rm 2078  
Wichita, KS 67202.3802

143-50

**Receive this publication by email  
please send your email address to:  
t.runnells@kcc.ks.gov**



### **Check it Out @ <http://kcc.ks.gov/>**

- ✓ Reference guide to Gas Gathering: *"What's New - Natural Gas Gathering Reference Guide"*
- ✓ KCC current forms: Click on Oil & Gas and scroll down to Conservation Forms.