



Protecting Evidence



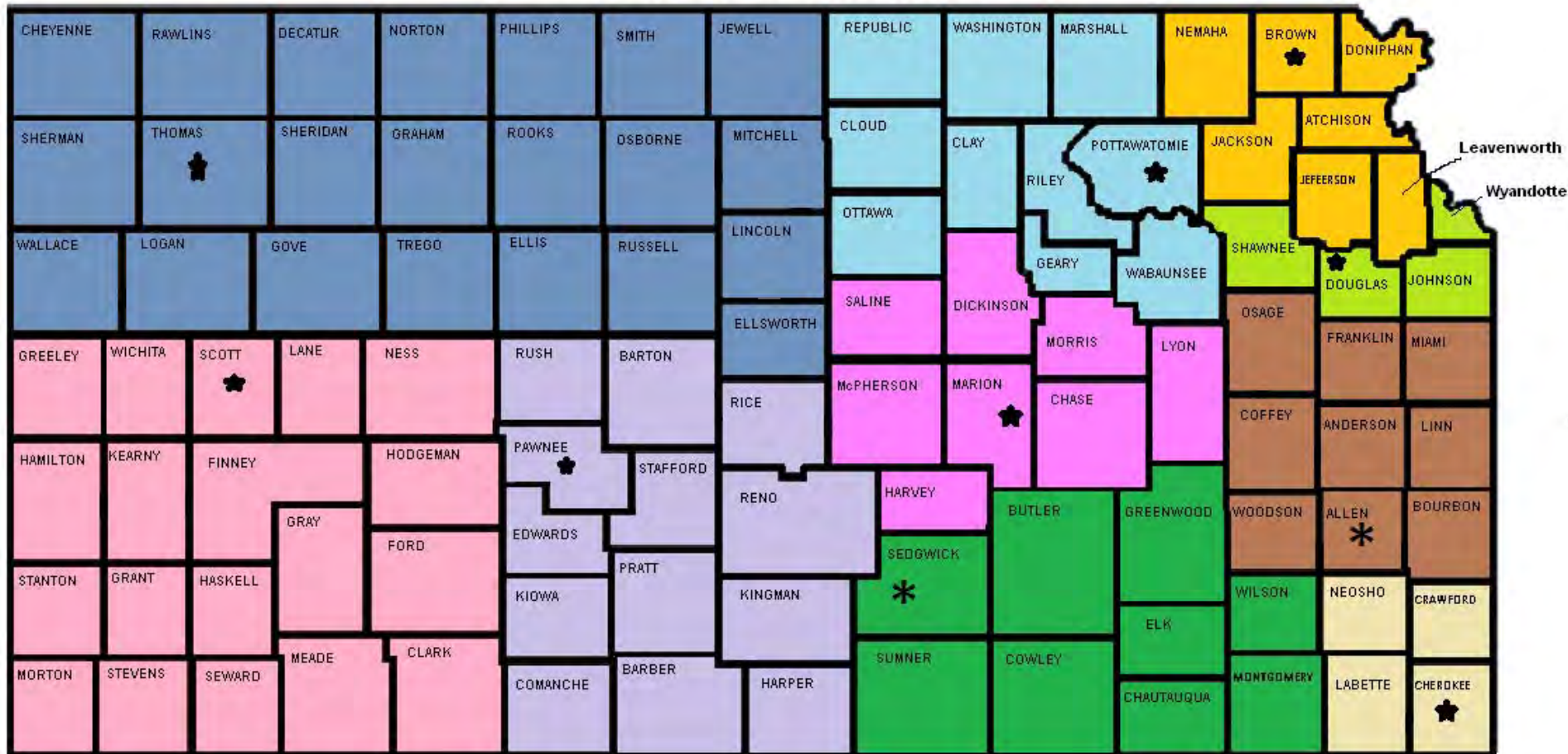
OFFICE OF THE STATE FIRE MARSHAL

Lamar Shoemaker
Cell 785-207-2183
Office 785-296-3401

State of Kansas

Office of the State Fire Marshal

Fire Investigation Territory Map



- | | | | |
|--|--|---|--|
|  Thomas |  Bailey |  Shoemaker |  Tippie |
|  Smyth (W. Super) |  Mercer |  Celeste (E. Super) | |
|  Reece |  Sipp |  Lawrence | |

Revised 4/6/2016

Pipeline and Hazardous Material Safety Administration

PHMSA Pipeline Incidents: (1996-2015)

Incident Type: Significant System Type: ALL State: ALL

Calendar Year	Number	Fatalities	Injuries	Total Cost Current Year Dollars
1996	301	53	127	\$160,493,640
1997	267	10	77	\$108,651,900
1998	295	21	81	\$171,788,012
1999	275	22	108	\$175,525,063
2000	290	38	81	\$253,630,641
2001	233	7	61	\$77,849,980
2002	258	12	49	\$123,167,132
2003	297	12	71	\$162,180,014
2004	309	23	56	\$310,240,672
2005	336	16	46	\$1,456,069,355
2006	257	19	34	\$155,229,462
2007	265	15	46	\$146,842,267
2008	278	8	54	\$584,330,986
2009	275	13	62	\$178,258,586
2010	264	19	103	\$1,825,913,499
2011	288	12	51	\$441,082,033
2012	253	10	54	\$230,272,331
2013	304	8	42	\$350,275,471
2014	303	19	95	\$302,261,398
2015	326	10	49	\$328,308,610
Grand Total	5,674	347	1,347	\$7,542,371,051

PHMSA Pipeline Incidents: (1996-2015)

Incident Type: Significant System Type: ALL State: KANSAS

Calendar Year	Number	Fatalities	Injuries	Total Cost Current Year Dollars
1996	16	0	4	\$1,637,040
1997	15	0	2	\$467,930
1998	12	0	1	\$1,220,894
1999	12	0	0	\$2,120,921
2000	10	0	0	\$1,833,286
2001	10	0	1	\$1,465,609
2002	12	1	0	\$3,716,063
2003	16	0	3	\$13,134,238
2004	8	0	2	\$2,784,688
2005	18	0	1	\$6,586,338
2006	10	2	4	\$8,684,353
2007	11	0	3	\$8,784,464
2008	12	0	0	\$13,576,418
2009	10	0	4	\$2,693,378
2010	12	0	2	\$2,444,071
2011	16	0	0	\$4,088,291
2012	12	1	4	\$4,807,083
2013	15	0	0	\$4,621,891
2014	9	0	1	\$2,216,427
2015	11	0	0	\$4,779,828
Grand Total	247	4	32	\$91,663,211







31-403. Disclosure of information by insurance companies; disclosure of information by authorized agency; immunity from liability in civil actions. (a)

Any authorized agency may, in writing, require an insurance company to release to the requesting agency any or all relevant information or evidence deemed important to the authorized agency which the company may have in its possession, relating to a fire loss. Relevant information may include, without limitation herein:

31-404. Disclosure of information by an individual; immunity from liability in civil actions. Any individual who provides information to an authorized agency, whether oral or written, concerning the damaging of any building or property by fire shall be immune from any liability arising out of a civil action by reason of providing such information

31-405. Confidentiality of information; personnel of authorized agency required to testify. (a) Except as otherwise provided in K.S.A. 31-403(c), any authorized agency or insurance company described in K.S.A. 31-402 or 31-403 which receives any information furnished pursuant to this act, shall hold the information in confidence until such time as its release is required pursuant to a criminal or civil proceeding.

(b) Any authorized agency referred to in K.S.A. 31-402, or its personnel, may be required to testify in any litigation in which the insurance company at interest is named as a party.

31-141. Same; powers of fire marshal in conduct of hearing; subpoena of witnesses and records; record of proceedings; statement; failure to comply with subpoena, effect; order by district court; service of process; costs, taxation. (a) Whenever the state fire marshal or the state fire marshal's authorized representative is authorized to conduct a hearing under the provisions of K.S.A. 31-138 and amendments thereto, the state fire marshal shall have the power to administer oaths, examine and cross-examine witnesses, receive oral and documentary evidence, and shall have the power to subpoena witnesses, compel their attendance, and require the production of books, papers, records, correspondence or other documents which are deemed relevant to the inquiry....

1905 Navajo Lane Topeka, KS

01-30-2012









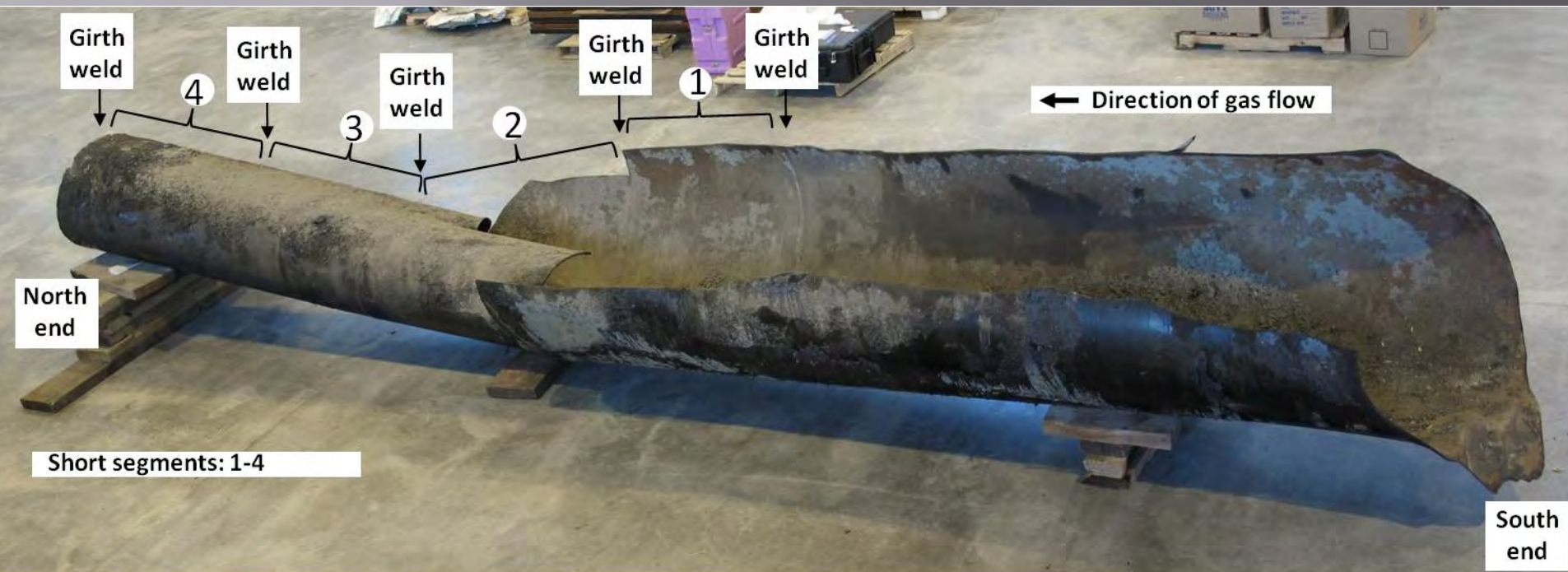


Considerations

- ▣ Witness Statements
- ▣ Time Lines
- ▣ Cellular Phone Records
- ▣ Kansas One Call Documents
- ▣ Origin & Cause



San Bruno



Girth weld

Girth weld

Girth weld

Girth weld

Girth weld

← Direction of gas flow

North end

Short segments: 1-4

South end

Consider Spoliation



SHUT IN TESTS





STATE
FIRE
MARSHAL



I MEAN LARGE..



RED DEPICTS THE WAVE
NOTE THE VOID LEFT AFTER
COMPRESSION THE
DECOMPRESSION





**Emporia Apartment Explosion
July 2002**

GAS LINE BREAK



DIRECTIONAL











THERMAL WAVE



WAVE DAMAGE

THERMAL ACTIVITY





Welda Pipeleine



Drone View



Ignition Source?



Thermal Activity



Wire Impression



Path of Travel



Line



The Missing Link



Beverly Ks.

- ▣ 647 N. 290th Ave.
- ▣ Oct 19 2016
- ▣ Reported one injury explosion













075
04-S
R-275
250
13181110

N.N.G.M.
504502



















Directional Map-exterior



LEGEND

Lines depict blast debris travel patterns, high order
Red-greatest distance of debris and direction
Orange-secondary pattern including blast wave
evidence
Yellow-overall directional pattern
Yellow star-depicts estimated blast epi center
within the crawl space and directional patterns
Pink 4-pt star-estimated occupant location pre-
blast
White cloud-open gas line

100'

#51123

Blast Directional Map
evidence indicates high order to the west and low
order on the east
K-845

Directional Map-Interior



#51123
Blast directional map within
crawl-space
Black arrows depict travel from
known pre-blast locations
Yellow circle depicts area of
origin of the force patterns
Red circles are suspected gas line

Yellow arrows indicate force
vectors located

















OFFICE OF THE STATE FIRE MARSHAL

Lamar Shoemaker
Cell 785-207-2183
Office 785-296-3401